

Excursions – Thursday 5.9.2024

Alternative 1 – Excursion

Breakfast from: 7:00 – 8:00

Leaving hotel at 8:30 (meeting at the reception)

Excursion at 9:00 at grindery Fister Crystal, possibility to buy some crystal products



Guided tour in Poprad city center at 11:00



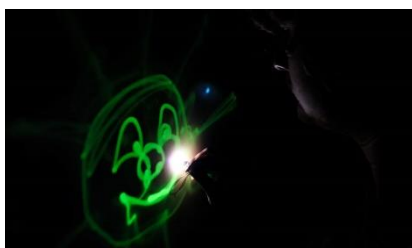
Lunch at 12:15 in the venue hotel

Leaving hotel at 13:10 (meeting at the reception)

Train to Starý Smokovec (at 13:36)

Cable railroad to Hrebienok

Interactive gallery of light at Hrebienok in the High Tatras at 15:00



Cable railroad/walking from Hrebienok to Starý Smokovec

Train to Poprad (leaving Starý Smokovec at 17:02, 17:26 or 18:02)

Contact person: **Martina Hančová +421 904 675 867**

Alternative 2 – Hiking

For hike the lunch box will be provided after breakfast. You can choose from 3 options:

Option 1: Biela voda – Šalviový prameň – valley of Zelené pleso – Zelené pleso and back

Difficulty: 2/5

15.4 km
Distance

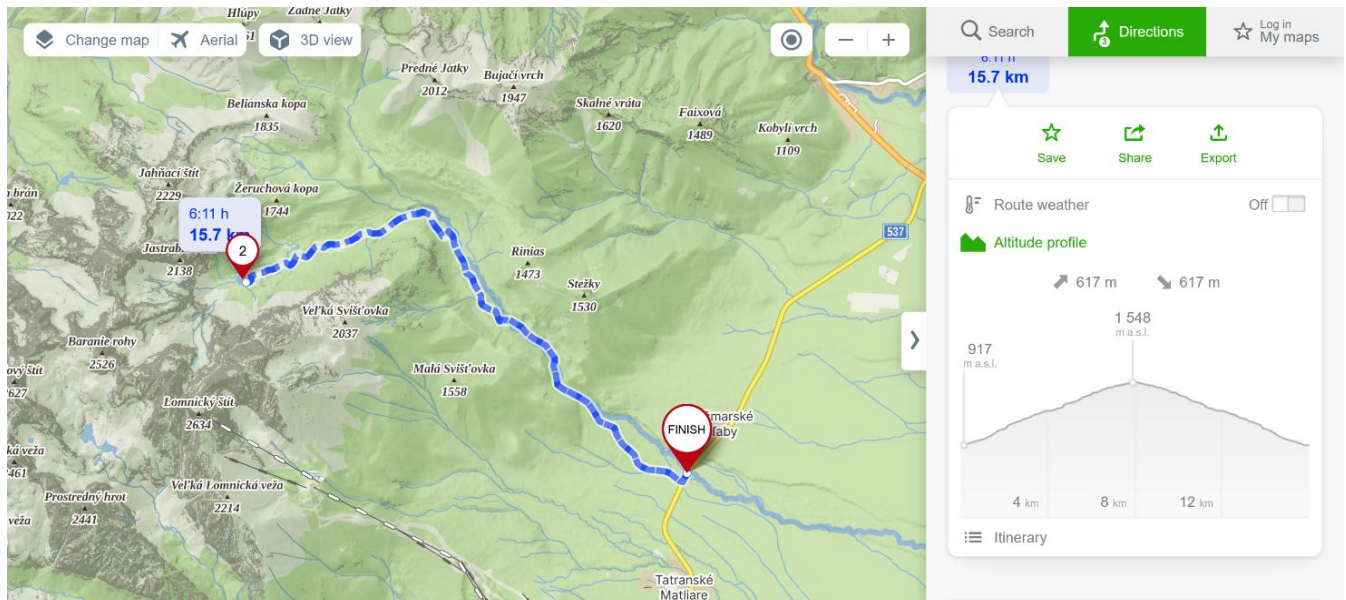
6:30 h
Duration

617 m
Ascent

617 m
Descent

1548 m
Highest point

917 m
Lowest point



Breakfast: 7:00 – 8:00

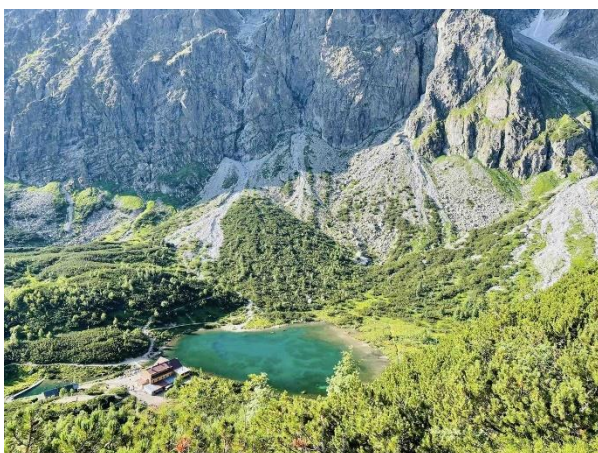
Leaving hotel at 8:10 (meeting at the reception)

Bus to Biela voda at 8:45 (arrival to Biela voda at 9:18)

The route starts from bus stop Biela voda. From there, a forest road along a small stream that flows from Veľké Bielé pleso leads deeper into the valley. Many parts of the route are covered with dense forest providing shade and coolness during the hot days. Zelené pleso is at the end of the valley which is abruptly stopped by a huge wall of peaks: Lomnický, Kezmaryský, Čierny, Kolový and Jastrabí. All more than two thousand meters high, the two-hectare lake probably looking like a pond from the top of them.

Bus to Poprad from Biela voda at 16:54, 17:54, 18:54, 19:54

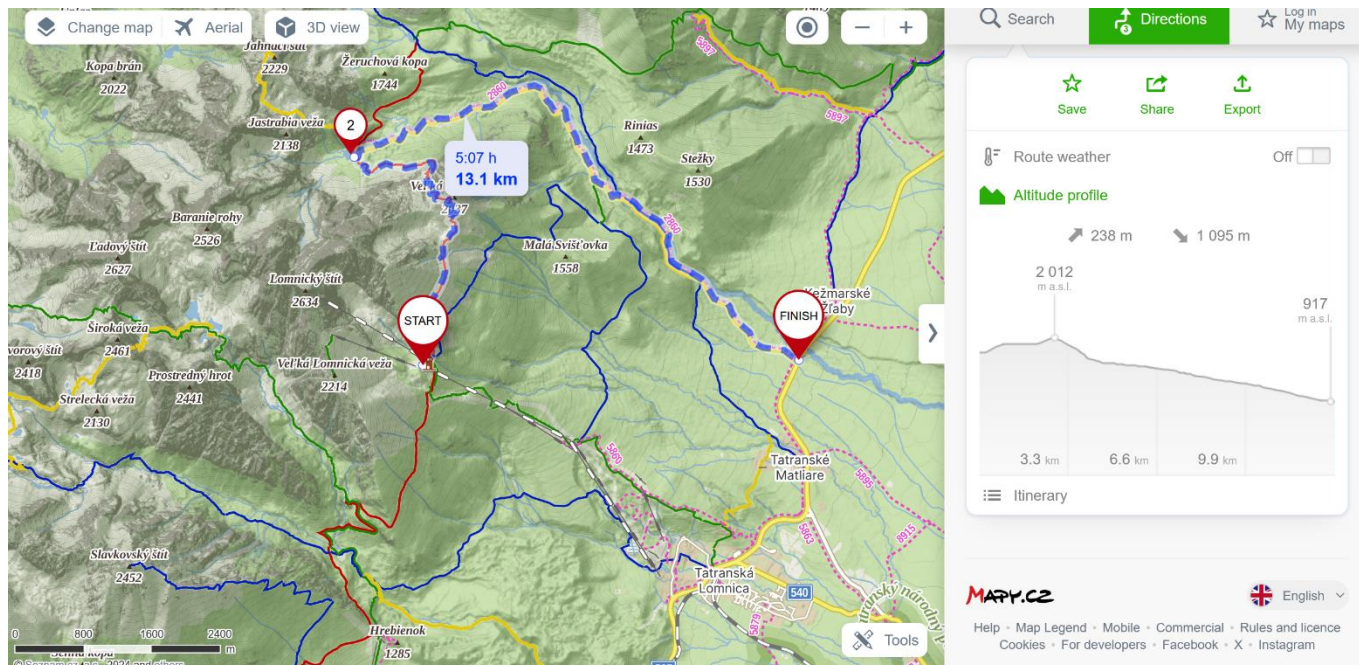
Contact person: **Júlia Volaufová +421 917 840 662**



Option 2: From Tatranská Lomnica to Zelené pleso through Skalnaté pleso and Svišťovka

Difficulty: 3/5 **! Good shoes needed !**

| | | | | | |
|----------------|---------------|--------------|---------------|---------------|--------------|
| 13.1 km | 5:30 h | 238 m | 1095 m | 2012 m | 917 m |
| Distance | Duration | Ascent | Descent | Highest point | Lowest point |



Breakfast: 7:00 – 8:00

Leaving hotel at 8:10 (meeting at the reception)

Train to Tatranská Lomnica (change the train at Starý Smokovec)

The route starts at Tatranská Lomnica from where you will take the cable car to Skalnaté pleso. From Skalnaté pleso to Zelené pleso leads rocky track with some chains on few places. At Zelené pleso you will meet Option 1 group coming to Zelené pleso from Biela voda and join them on the way to Biela voda. From Biela voda you will take the bus to Poprad.

Bus to Poprad from Biela voda at 16:54, 17:54, 18:54, 19:54

Contact person: **Katarzyna Filipiak** +48 507 336 849



Option 3: Starý Smokovec – Hrebienok – Zámkovského chata – Skalnaté pleso –

Tatranská Lomnica

Difficulty: 3/5 ! Good shoes needed !

14.5 km
Distance

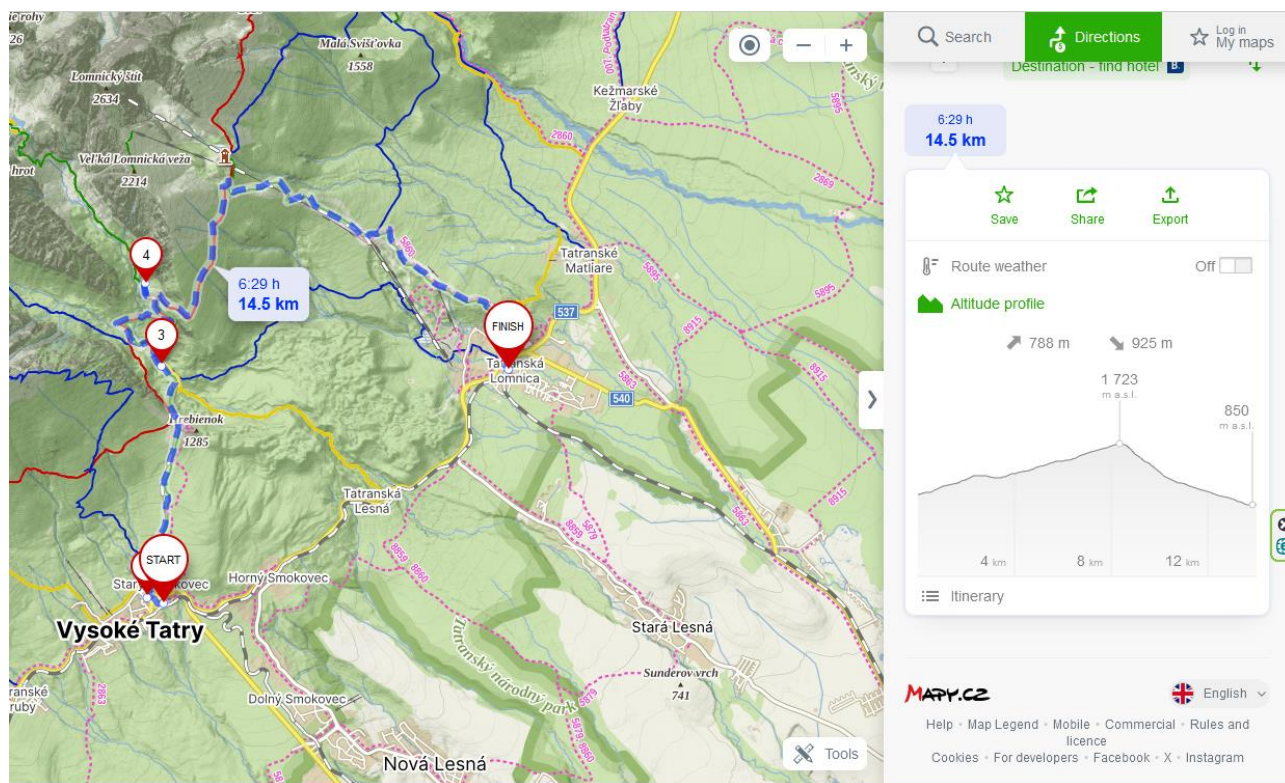
6:30 h
Duration

788 m
Ascent

925 m
Descent

1723 m
Highest point

850 m
Lowest point



Breakfast: 7:00 – 8:00

Leaving hotel at 8:10 (meeting at the reception)

Train to Starý Smokovec (arrival to Starý Smokovec at 10:06)

There are 5 stops on the route to the Skalnaté pleso from Starý Smokovec – Hrebienok (tourist centre), along Studený potok (creek) will route leads to Vodopády Studeného potoka (waterfalls), Rainerova chata (chalet), Zámkovského chata (challet), Lomnická vyhládka (nice view).

Train to Poprad via Starý Smokovec at 15:42, 16:42, 17:42 or 18:42

Contact person: **Daniel Klein +421 907 991 504**

